



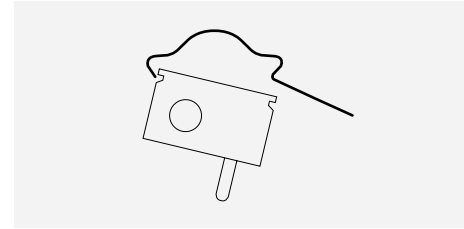
MAKE IT SAFE



Young children can be strangled by loops in pull cords, chains tapes and inner cords that operate the product. To avoid strangulation and entanglement, keep cords out of the reach of young children. Cords may become wrapped around a child's neck. Move beds, cots and furniture away from window covering cords. Do not tie cords together. Make sure cords do not twist and create a loop.

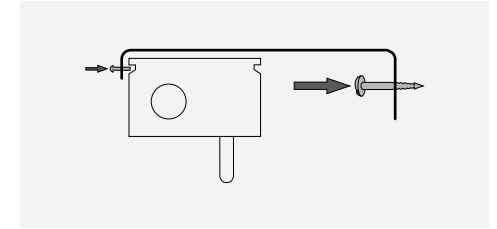
VERTICAL BLIND

STEP 1: INSTALLING THE HEADRAIL



Top fixing - Fix brackets to the ceiling or under side of the recess allowing at least 50mm from the wall or window frame to avoid the louvres catching. The remaining brackets should be spaced evenly between the two outer brackets. We recommend that the brackets are no further than 600mm apart.

Tilt and hook the front of the headrail into the brackets. Push the headrail up into the spring bracket until it clicks and holds in position. To release the headrail push the tab at the back of the bracket up.

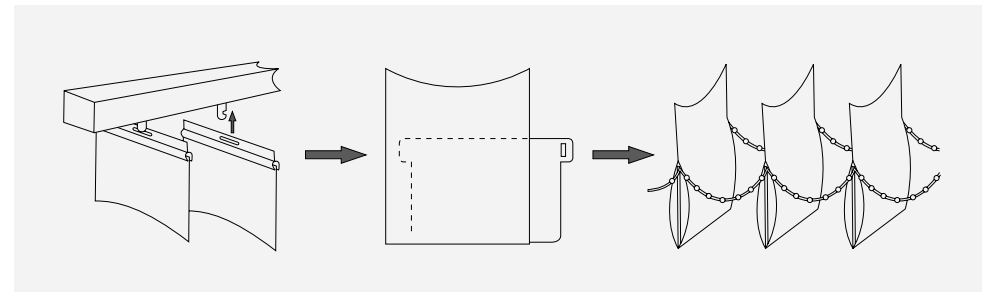


Face fixing - Fix brackets to the wall or window frame at the desired height allowing at least 50mm from the end of the headrail. The remaining brackets should be spaced evenly between the two outer brackets. We recommend that the brackets are no further than 600mm apart.

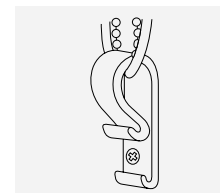
Tilt and hook the back of the headrail into the brackets. Push the headrail up so that the top of the headrail is now flush with the inside of the brackets and tighten the screw to lock the headrail into place.

STEP 2: HANGING THE LOUVRES

- Turn the controls until the hooks on the headrail are at right angles to the window.
- Hang the louvres on the hooks, keeping all seams facing the same direction.
- Attach the connecting chain by sliding the clip on to the weight post.



STEP 3: MAKE IT SAFE



This blind contains a tensioning device for child safety. The tensioning device must be securely fixed to the wall or recess adjacent to the blind and out of reach of children. The chain and cord must be secured under tension as shown.

- Headrails shall not be installed less than 1.5m from the floor
- The accumulation system shall be installed as close to the headrail as possible and in all cases not less than 1.5m from the floor.